

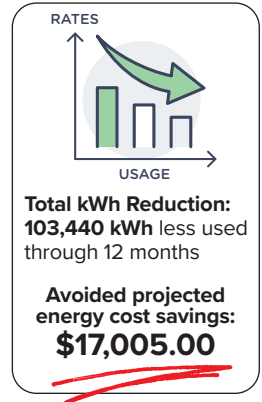


# HVAC ENERGY REDUCTION SYSTEM

## American Leadership Academy, Charter School, Gilbert, AZ reduced their 2025 A/C - Heat Pump kWh usage by 21.52% saving a total of \$17,005

The SIMIX 2-Step System combines a powerful HVAC/R cleaner and a protective ceramic clearcoat which significantly improves heat transfer, shortens run-time, reduces energy usage and extends equipment life.

The HVAC system at the 59,300 square-foot ALA Gilbert South Pre-K-6 Elementary Charter School includes forty four (44) 9-year old Trane™ RTUs totaling 215.5 tons. Russell McArthur, Director of Fleet and System Readiness observed the cleaning and coating of all units using the SIMIX Multi-Surface Ceramic Clearcoat. Two initial coats of SIMIX were applied on December 20th to the condenser and evaporator coils, as well as the condenser fan blades. A third coat was applied on April 19th to reflect our updated program for Energy Optimization.

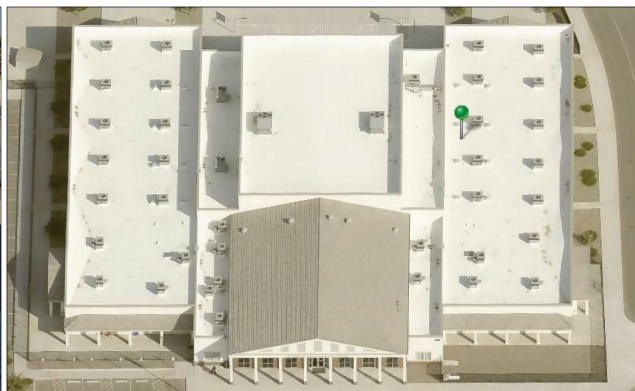


Normal Cooling Season Apr.-Oct.

	UNCOATED			COATED WITH SIMIX				COATED WITH SIMIX (after 2 years)				Cumulative Savings		
	2024			2025 Cumulative kWh Reduction				2026 Cumulative kWh Reduction						
	Avg. temp.	kWh's use	Cost	Avg. temp.	kWh's use	Compared to 2024 less kWh's / percentage		Cost	Avg. temp.	kWh's use	Compared to 2024 less kWh's / percentage		Cost	
Jan	53.4°	29,400	\$3,287.44	57.3°	24,720	4,680 less	15.92%	\$2,986.89	62.1°	17,040	12,360 less	42.04%	\$1,711.18	\$1,576.26
Feb	57.9°	32,280	\$3,265.62	59.3°	23,160	13,800 less	28.25%	\$2,713.34	65.1°	18,360	26,280 less	43.12%	\$1,856.70	\$2,985.18
Mar	63.3°	31,440	\$3,257.56	63.9°	24,840	20,400 less	20.98%	\$2,724.38	72.6°	23,280	34,440 less	25.94%	\$2,414.64	\$3,828.10
Apr	67.8°	30,480	\$3,094.84	73.2°	29,040	21,840 less	4.72%	\$3,219.77	80.0°	29,040	35,880 less	4.72%	\$2,927.65	\$3,995.29
May	80.2°	48,840	\$5,789.44	77.8°	32,520	38,160 less	33.4%	\$4,288.63	81.4°	34,320	50,400 less	29.73%	\$4,225.84	\$5,558.89
June	90.8°	45,840	\$5,818.94	90.9°	32,160	51,840 less	29.84%	\$4,378.27						
July	99.0°	48,840	\$6,758.79	95.6°	37,440	63,240 less	23.34%	\$5,659.30						
Aug	96.8°	60,600	\$8,392.09	97.4°	50,280	73,980 less	17.03%	\$7,923.75						
Sept	93.1°	52,680	\$6,734.15	92.0°	44,760	81,902 less	15.03%	\$6,281.60						
Oct	88.5°	41,760	\$5,669.14	80.6°	30,960	92,280 less	21.86%	\$4,200.76						
Nov	66.6°	28,800	\$3,445.01	73.2°	25,560	95,520 less	21.18%	\$2,665.33						
Dec	61.7°	29,760	\$3,041.40	59.1°	21,840	103,440 less	21.52%	\$2,185.03						
<b>Total</b>		<b>480,720</b>	<b>\$58,555.00</b>		<b>377,280</b>	<b>21.52% less kWh</b>		<b>\$49,227.00</b>						
<b>Projected Energy Bill for 2025 with 11.59% rate increase @0.1378: \$66,232.00</b>								<b>Saved from Projected Energy Cost: \$17,005.00. (25.67% Savings)</b>						



Three of ALA Gilbert's Trane 4-ton units



ALA Gilbert South Pre-K-6 Elementary School is located in Phoenix's East Valley area

- Reduces your kWh consumption 12–24%
- Destroys all foul musty odors
- Prevents salt damage
- Units stay cleaner longer
- Add years to your A/C units
- Payback 4–10 months

**A New Standard in Efficiency, Protection, and Air Quality**

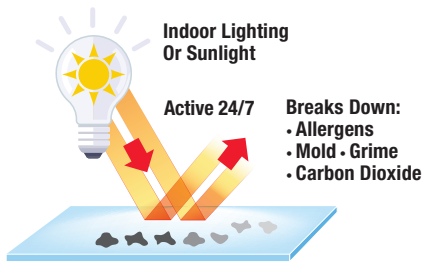
**A/C - HEAT PUMPS - REFRIGERATION - ALL TYPES OF ROOFS - ALL EXTERIOR & INTERIOR SURFACES**

# The Key to Better Indoor AIR QUALITY



## RESULTS

- Breaks down greenhouse gases, airborne allergens, germs, viruses, mold, foul odors and generates clean fresh air
- Eliminates Dirty Sock Syndrome
- Prevents Legionella
- Prevents salt damage
- Cuts down on sick days
- Reduces PM time
- Significantly improves air flow
- Prevents airborne kitchen grease build-up
- Can be easily applied in the field
- Units stay cleaner longer
- Adds years to the life of unit
- Payback 4–10 months



## What is SIMIX?

SIMIX Ceramic Clearcoat is a permanent, hygroscopic, non film-forming, super-hard liquid glass that will never yellow, chip, peel or crack. Just like in glass, the primary ingredient in SIMIX is silica (sand). That is mixed with potassium and lithium, which are very conductive. SIMIX conducts heat. It is not an insulator, like all other coil coating products on the market today.

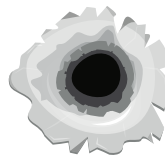
## What is hygroscopic?

A continual process to attract and adsorb water molecules from the air to the surface. This process of evaporative cooling draws heat from the coils and also enhances the sustainable photocatalytic oxidation technology (SPOT-ON™) which breaks down greenhouse gases, airborne allergens, germs, viruses, mold, foul odors and generates clean fresh air.

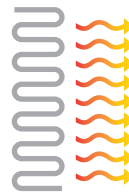
## Why do you need SIMIX?

Air conditioners start losing efficiency the moment you install them. Tiny gaps are created by the expansion and contraction of the tubes and fins. Airborne corrosive particles and salt ions enter those microscopic gaps, corroding the unit and making it less efficient. SIMIX fills in those microscopic gaps, leaving behind a smoother surface that improves heat transfer.

## What does SIMIX do?



SIMIX fills in microscopic gaps between fins and tubes created by salt, air pollution, and expansion and contraction.



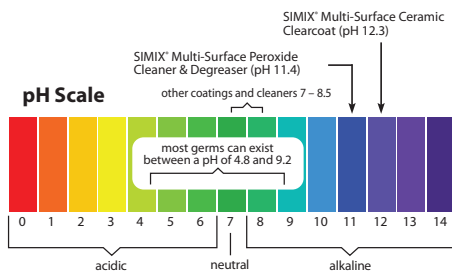
SIMIX is a conductor. It pulls heat away from the coils.



SIMIX SPOT-ON technology breaks surface tension allowing the fans to pull more air through the condenser and evaporator coils, destroying odors and generating clean, fresh air, indoors and outdoors.

## What is SPOT-ON?

**Sustainable Photocatalytic Oxidation Technology (SPOT)** is what we call the titanium dioxide inside SIMIX Clearcoat and SIMIX Cleaner. Titanium dioxide is a safe, naturally occurring compound that reflects natural and artificial light. As that light is reflected, it converts water in the air into a radical form of hydrogen peroxide, often referred to as the “detergent” of the atmosphere which breaks down greenhouse gases, airborne allergens, germs, viruses, mold, foul odors and generates clean fresh air.



**Mold, bacteria and pollen** – and the odors they create – live and grow on surfaces that have a pH level between 4.8 and 9.2. While most cleaning and coating products are pH neutral, SIMIX Multi-Surface Cleaner/Degreaser/Sanitizer (pH 12.5) and SIMIX Multi-Surface Ceramic Clearcoat (pH 12.3) create a permanent, safe, high pH that prevents the growth of mold, bacteria and viruses.



REAL SUSTAINABILITY • REAL SAVINGS™

SIMIX | KENOSHA, WISCONSIN | [info@simixusa.com](mailto:info@simixusa.com) | [simixusa.com](http://simixusa.com)



MADE IN USA

SMX193-6



SIMIX 2-Step Cleaner & Ceramic Clearcoat System